

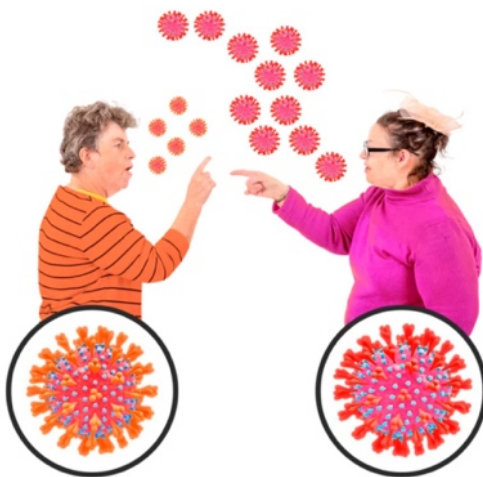
Beacon Films & Star and Shadow Covid Rules – Cinema screenings



People with underlying health issues and/or learning disabilities are at higher risk of coronavirus than those without.

Find out more at

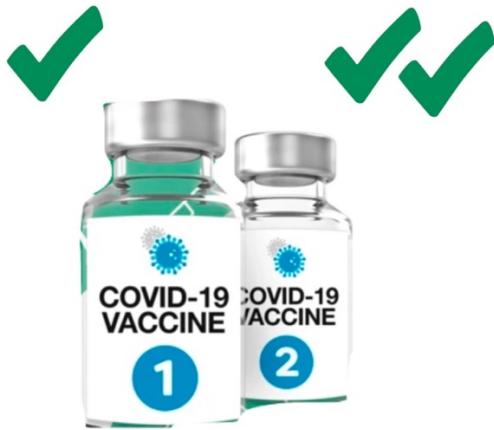
<https://www.mencap.org.uk/sites/default/files/2021-01/shielding%20advice%20Jan%20lockdown.pdf>



According to the NHS "There is a chance you might still get or spread COVID-19 even if you have a vaccine, so it's important to continue to follow all social distancing guidance."

Read more information about the effectiveness of vaccines

here: <https://www.nhs.uk/conditions/coronavirus-covid-19/coronavirus-vaccination/coronavirus-vaccine/>



According to the NHS, "the 1st dose should give you some protection from 3 or 4 weeks after you've had it but you need 2 doses for stronger and longer-lasting protection."

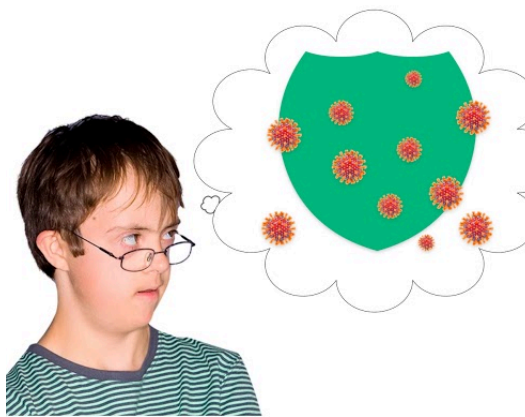
Read more information about the effectiveness of vaccines here: <https://www.nhs.uk/conditions/coronavirus-covid-19/coronavirus-vaccination/coronavirus-vaccine/>



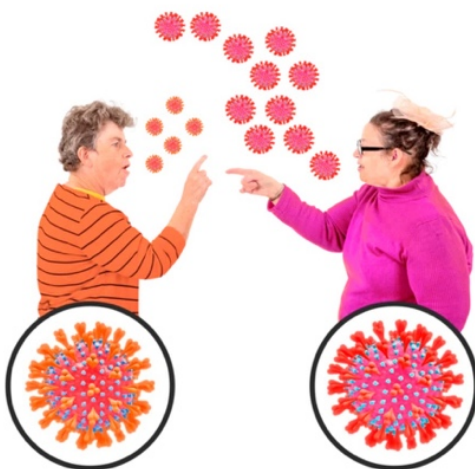
If everyone follows these Covid rules then this should reduce the risk of people catching the virus.



BUT we CANNOT remove the risk of catching Coronavirus entirely.



If you are classed as 'clinically vulnerable' you must follow medical advice when deciding whether to come to the cinema or not.



Even if you are fully vaccinated you can STILL carry the virus without knowing it.



This is why we encourage everyone who can, to take a Lateral Flow Test before coming to the cinema – and only come if the test is 'negative'



If you feel physically unwell (with anything, not just Covid symptoms) YOU MUST NOT come to the cinema, EVEN IF you have been fully vaccinated



If you feel unwell (with anything, not just Covid symptoms) WHILST you are at the cinema you MUST tell the person supporting you if you are with them, or a member of staff who will arrange for you to go home.



Keep as much distance as you can from other audience members and staff. If someone asks you to move away from them, please don't take it personally. They just want some extra space.



Please wear a face covering when in the Star and Shadow building or in the cinema, unless you are exempt.



There are hand sanitisers around the building. Please wash and/or sanitise your hands regularly.



There is no food available at the cinema and you **cannot** bring your own.

You can buy drinks at the cinema or you **can** bring your own.



If you have a First Aid emergency, a Star and Shadow volunteer may need to break social distancing rules in order to help you



If you have any questions or worries about how to go to one of our Relaxed Screenings at Star and Shadow cinema in a safe way please contact us!

info@beaconfilms.org.uk

0191 580 7000